

# Tutorial: Structural integrity and child schemas

version: 1

Author: David Haasler

**Table of contents**

1        Structural integrity and child schemas..... 2

## Requirements

No more prerequisites are needed for this tutorial than for the preceding tutorials.

>  
>  
>

## Description

The quotation administration is extended by one archive. The structural integrity within the system is shown.

## Signs and symbols



Boxes marked with an arrow symbol and a green border contains instruction of what to do next.



This kind of boxes contains tips and tricks.

Source code is shown in blue boxes.

## 1 Structural integrity and child schemas

We will now create a further quotation container “time archive”.



To do this, right-click on the system root and select the schema “Quotations” under “New”. Name this “Quotation Archive” and return it.

We can now move quotations into the archive.



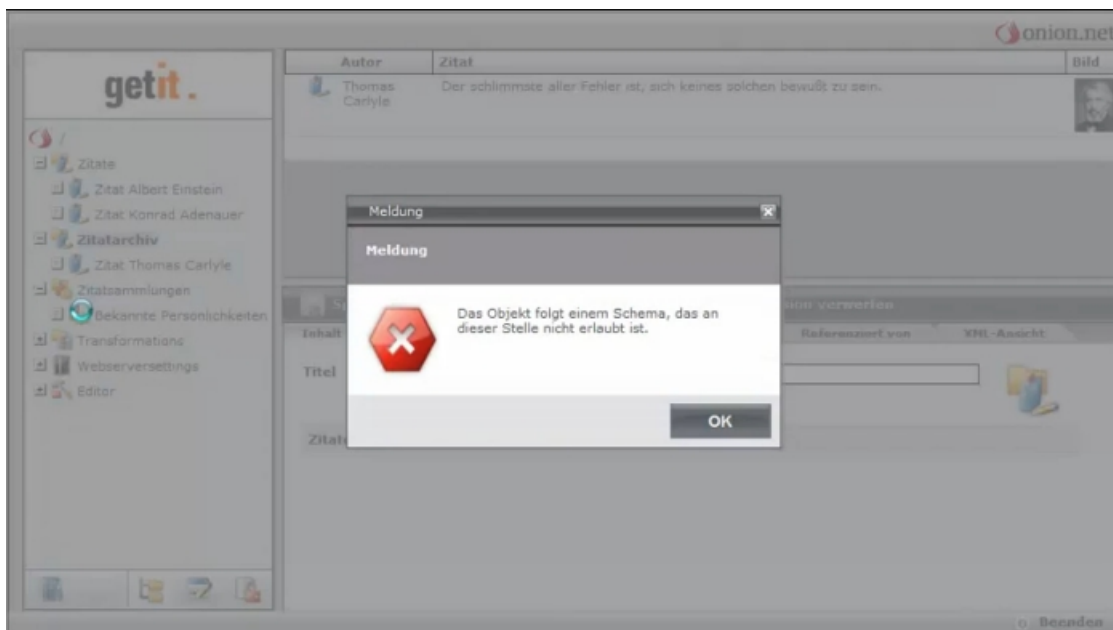
Move the quotation of Thomas Carlyle from your container “Quotations” and into the “Quotation Archive”.

We will now try to store a quotation below a collection.



To do this, drag the quotation of Albert Einstein from your container “Quotations” and into your quotation collection “Famous Personalities”.

The child schema will not allow you to do this. The message appears “The object is following a schema that is not permitted here”. We will now supplement it to accept quotations.





Now right-click on “Famous Personalities” whilst holding down the ALT key and select the point “navigate to the schema” under “extras”.

Now drag the schema “quotations/quotation” into the area “child schemas” of the selected schema.

Thanks to the newly created child schema you can now drag the quotation of Albert Einstein into your container “Famous Personalities”.